

ZOLAR

Technology & MFG

Connecting to Laser Dentistry

Photon Series **DENTAL** Diode Lasers



Zolar Technology & Mfg Co. Inc

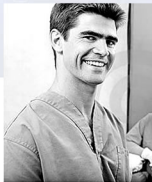
Photon Series

Photon: 3 Watts • Photon Plus: 10 Watts



Applications of Zolar Dental Diode Lasers (Photon Series)

- Exposure of Unerupted teeth
- Excision of lesion or removal of Granulation Tissue**
- Fibroma Removal*
- Frenectomy
- Gingival Troughing for crown impressions
- Gingivoplasty
- Hemostasis and coagulation
- Gingival incision and excision hemostasis
- Implant recovery
- Incision and drainage of abscess
- Leukoplakia
- Operculectomy
- Oral papillectomies
- Pulpotomy as an adjunct to root canal therapy
- Reduction of gingival hypertrophy
- Soft tissue crown lengthening
- Gingival bleeding index
- Excisional and incisional biopsies
- Treatment of canker sores, herpetic and aphthous ulcers of the oral mucosa
- Vestibuloplasty



Precise, safe and efficient surgical procedures on all oral soft tissues, including fibroma removal, frenectomies.

Zolar Dental Diode Lasers (Photon Series) Usage in Periodontal Procedures

Sulcular debridement (removal of diseased or inflamed soft tissue in the periodontal pocket to improve clinical indices including: gingival index, probe depth, attachment loss and tooth mobility)

Debridement of diseased epithelial lining**

Removal of highly inflamed edematous tissue affected by bacteria penetration of the pocket lining and junctional epithelium*



* Photon
** Photon Plus

Photon: 3 Watts ● Photon Plus: 10 Watts

Photon Photon+

Technical Information

Wavelength: 810nm (Photon 3W)
Wavelength: 980nm (Photon Plus 10W)
Weight: <2kgs
Dimensions: 187 x 148 x 38 mm

Settings

Manual (Power, Time, Mode)
Capability for 21 Treatment presets and 4 customized presets (Photon 3W)
Capability for 22 Treatment presets and 3 customized presets (Photon Plus 10W)
3 levels of aiming beam intensity

Modes

Continous or Pulse Mode
Pulse Interval: 0.01ms - 9.9s
Pulse Duration: 0.01ms - 9.9s
Duty Cycle: Adjustable
Autoclave: Hand piece autoclavable

Power Requirements

AC100-240V 50/60Hz
Lithium battery 16.8V 10AH
Wireless Pedal 1.5V Battery

Complies with

IEC 60601-1
IEC 60601-2-22
UL 60601-1
CAN/CSA C22.2 NO.601.1
IEC 60825-1
IEC 60601-1-2
FCC Part 15C
IC-RSS 210



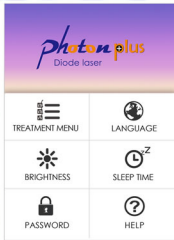
EDITABLE PRESETS

Here you can enter your preferred settings for easy access.



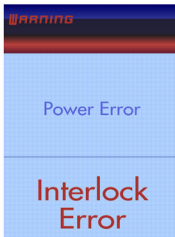
MENU OPTION

Menu option screen



HELP

Here you can get a guidance of operation

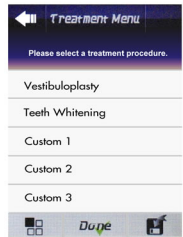


WARNING

The system advises the operator of any malfunction by a message on the screen and a warning sound.

PASSWORD PROTECTION

Photon uses digital password instead of a key for security purposes. After self-diagnostic routine, there appears password screen.



CUSTOMIZABLE PROGRAMS

You can create / change your own procedure / new application

ACCESSORIES



BUILT-IN TUTORIAL FEATURE



LARGE 3.5 INCH LCD DISPLAY



LONG LASTING BATTERY (3.5 to 4 HRS)



MULTILINGUAL INTERFACE



WIRELESS FOOT CONTROL with WIRED OPTION



TOOTH WHITENING WITH PHOTON PLUS **

- Laser assisted teeth whitening/bleaching
- Light activation for bleaching materials for teeth whitening.



Gingival Troughing



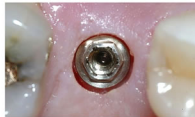
Oral Papillectomies

Commonly known benefits of using laser therapy:

- Procedures with almost NO BLOOD CHEMISTRY
- Swelling...which you never feel or notice.
- Little to no tissue recession due to controlled thermal damage
- Gentle and comfortable - often requiring only mild topical anesthetic.
- Improved post-operative healing in all procedures.



Crown Lengthening



Implant Recovery



Herpetic Ulcer Treatment



Fibroma Removal

* Photon

** Photon Plus

ZOLAR

Technology & MFG

ZOLAR LASERS

Zolar Technology & Manufacturing Co. Inc

Mississauga, ON Canada

Tel: 905.593.3605, 905.581.5235

Fax: 1 888.426.7728

www.zolartek.com

sales@zolartek.com



Distributor / Dealer Address